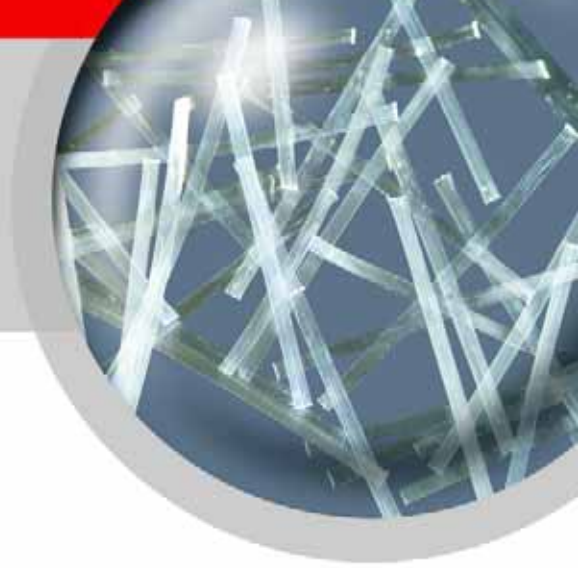


FIBERMESH® 650

PRODUCT DATA SHEET



FIBERMESH® 650 SYNTHETIC FIBER

Fibermesh 650 is an engineered graded macro-synthetic fiber used for secondary reinforcement for concrete—an alloy polymer macro-synthetic fiber featuring e3® patented* technology manufactured to an optimum gradation and highly oriented to allow greater surface area contact within the concrete resulting in increased interfacial bonding and flexural toughness efficiency. Fibermesh 650 is specifically engineered and manufactured in an ISO 9001:2000 certified facility for use as concrete secondary reinforcement at a minimum addition rate of 3.0 lbs per cubic yard (1.8 kg per cubic meter). Complies with ASTM C III6/C III6M, Type III fiber reinforced concrete.

*Covered by US Patent # 5628822, 5456752

ADVANTAGES

Requires no minimum amount of concrete cover • Is always uniformly positioned in the concrete and in compliance with codes • Safe and easier to use than traditional reinforcement • Saves time and hassle

FEATURES & BENEFITS

- Graded macro-synthetic fiber for concrete secondary reinforcement used as an alternate to welded wire reinforcement and light rebar
- Inhibits the formation of plastic shrinkage and plastic settlement cracking
- Provides impact, abrasion and shatter resistance
- Greater surface area provides increased flexural toughness (residual strength)
- Improved ductility
- Provides improved durability
- Control of drying shrinkage and temperature cracking
- Good finishing characteristics
- Pumpable reinforcement

PRIMARY APPLICATIONS

- Slabs-on-ground
- Sidewalks/Driveways
- Parking areas
- Overlays & toppings
- Exterior pavements
- Non-magnetic applications
- Shotcrete
- Composite metal decks

CHEMICAL AND PHYSICAL PROPERTIES

Absorption	Nil	Melt Point	324°F (162°C)
Specific Gravity	0.91	Acid & Salt Resistance	High
Fiber Length	Graded	Aspect Ratio	96.5
Electrical Conductivity	Low		

DO SPECIFY FIBERMESH 650 FIBERS:

- Reduced plastic shrinkage cracking
- Alternate to traditional steel for temperature/shrinkage and flexural reinforcement
- Improved impact, shatter and abrasion resistance
- Increased levels of residual strength/flexural toughness
- Improved ductility
- Improved durability

DO NOT SPECIFY FIBERMESH 650 FIBERS:

- Decreasing the thickness of slabs
- Replacing structural levels of steel reinforcement

FIBERMESH® 650

PRODUCT USE

MIXING DESIGNS AND PROCEDURES: Fibermesh® 650 reinforcing is a mechanical, not a chemical process. Due to fiber efficiency, minor mix design modifications may be required depending on the application. Consult your Propex Concrete Systems representative for recommendations. Fibermesh 650 macro-synthetic fiber is added to the mixer before, during or after batching the other concrete materials. Mixing time of at least 5 minutes at mixing speed is required as specified in ASTM C 94.

FINISHING: Fibermesh 650 reinforced concrete can be finished with normal finishing techniques in accordance with ACI 304, Section C.3.

APPLICATION RATE: The minimum application rate for Fibermesh 650 macro-synthetic fiber is 3.0 lbs per cubic yard (1.8 kg per cubic meter) of concrete. For Shotcrete or specialty concrete performance consult your Propex Concrete Systems representative for specific dosage recommendations.

GUIDELINES

Fibermesh 650 macro-synthetic fibers should not be used to replace structural reinforcement. Fibermesh 650 fibers should not be used as a means of using thinner concrete sections than original design. For joint spacing, follow industry standard guidelines suggested by PCA and ACI.

COMPATIBILITY

Fibermesh 650 is compatible with all commonly used concrete admixtures and performance enhancing chemicals.

PACKAGING

Fibermesh 650 macro-synthetic fibers are available in 1.5 lb toss-in degradable bags. Bags are packed into cartons, shrink wrapped and palletized for protection during shipping.

TECHNICAL SERVICES

Trained Propex Concrete Systems specialists are available worldwide to assist and advise in specifications and field service. Propex Concrete Systems representatives do not engage in the practice of engineering or supervision of projects and are available solely for service and support of our customers.

REFERENCE DOCUMENTS

- ASTM C 94/C 94M Standard Specification for Ready-Mixed Concrete.
- ASTM C 1116/C 1116M Standard Specification for Fiber-Reinforced Concrete.
- ASTM C 1399 Standard Test Method for Obtaining Average Residual-Strength of Fiber-Reinforced Concrete.
- ASTM C 1436 Standard Specification for Materials for Shotcrete.
- ASTM C 1609/C 1609M Standard Test Method for Flexural Performance of Fiber-Reinforced Concrete (Using Beam With Third-Point Loading). Replaces ASTM C 1018.
- ASTM C 1550 Standard Test Method for Flexural Toughness of Fiber Reinforced Concrete (Using Centrally Loaded Round Panel).
- JCI-SF4 Method of Test for Flexural Strength and Flexural Toughness of Fiber Reinforced Concrete.
- ACI 304 Guide for Measuring, Mixing, Transporting and Placing Concrete.
- ACI 506 Guide for Shotcrete.



UL® Classified: Type Fibermesh 650 fibers. For use as an alternate or in addition to the welded wire fabric in 1, 1-1/2, 2, 2-1/2 and 3 hr Floor-Ceiling D700, D800 and D900 Series Designs. Fiber added to concrete mix at a rate up to a maximum of 5.0 lb of fiber for each cubic yard of concrete.

SPECIFICATION CLAUSE

Fibermesh 650 graded macro-synthetic fiber shall be used for shrinkage and temperature reinforcement. Fibermesh 650 with e3® patented technology shall be specifically manufactured to an optimum gradation for use as concrete secondary reinforcement. Application rate shall be a minimum of 3.0 lbs per cubic yard (1.8 kg per cubic meter) of concrete. Fiber manufacturer shall document evidence of satisfactory performance history, ISO 9001:2000 certification of manufacturing facility, and compliance with ASTM C 1116/C 1116M, Type III fiber reinforced concrete. Fibrous concrete reinforcement shall be manufactured by Propex Concrete Systems, 6025 Lee Highway, Ste 425, PO Box 22788, Chattanooga, TN 37422, USA, tel: 423 892 8080, fax: 423 892 0157, web site: fibermesh.com.

PROPEX® | THE ADVANTAGE CREATORS.™
CONCRETE SYSTEMS

NORTH AMERICA
Propex Concrete Systems Corp.
6025 Lee Highway, Suite 425
PO Box 22788
Chattanooga, TN 37422
Tel: 800 621 1273
Tel: 423 892 8080
Fax: 423 892 0157

INTERNATIONAL
Propex Concrete Systems Ltd.
Propex House, 9 Royal Court, Basil Close
Chesterfield, Derbyshire, S41 7SL.UK
Tel: +44 (0) 1246 564200
Fax: +44 (0) 1246 465201
www.fibermesh.com

Fibermesh®, Novomesh®, Novocor®, ENDURO®, Fibercast® and e3® are registered trademarks of Propex Concrete Systems Corp.

THIS PUBLICATION SHOULD NOT BE CONSTRUED AS ENGINEERING ADVICE. WHILE INFORMATION CONTAINED IN THIS PUBLICATION IS ACCURATE TO THE BEST OF OUR KNOWLEDGE, PROPEX DOES NOT WARRANT ITS ACCURACY OR COMPLETENESS. THE ULTIMATE CUSTOMER AND USER OF THE PRODUCTS SHOULD ASSUME SOLE RESPONSIBILITY FOR THE FINAL DETERMINATION OF THE SUITABILITY OF THE INFORMATION AND THE PRODUCTS FOR THE CONTEMPLATED AND ACTUAL USE. THE ONLY WARRANTY MADE BY PROPEX FOR ITS PRODUCTS IS SET FORTH IN OUR PRODUCT DATA SHEETS FOR THE PRODUCT, OR SUCH OTHER WRITTEN WARRANTY AS MAY BE AGREED BY PROPEX AND INDIVIDUAL CUSTOMERS. PROPEX SPECIFICALLY DISCLAIMS ALL OTHER WARRANTIES, EXPRESS OR IMPLIED, INCLUDING WITHOUT LIMITATION, WARRANTIES OF MERCHANTABILITY OR FITNESS FOR A PARTICULAR PURPOSE, OR ARISING FROM PROVISION OF SAMPLES, A COURSE OF DEALING OR USAGE OF TRADE.